



45, chemin du Vieux Chêne
F-38240 MEYLAN
contact@neyrtec.eu
Tel +33 (0)4 76 61 63 10
Fax +33 (0)4 76 18 22 00

www.neyrtec.eu

CONTACT INFORMATION

Michel CLAEYS
Sales Manager

other contact :

Sylvia RIONDET-DELION
Customers Relations

other manufacturing & business plants :

SAINT BRUNO - CANADA
CMI GROUP - LIEGE - BELGIUM

KEY FIGURES

Turnover (2017) : 14 M€
Employees : 43

Equipment categories
Machinery for the paper and
board industry

NEYRTEC ENVIRONNEMENT

PRESENTATION / KNOW-HOW

CMI PROSERPOL designs and manufactures equipment and turnkey plants for waste water treatment and sludge dewatering systems, specifically for paper industry.

The Neyrtec(R) Tasster(R) is a screw press used for dewatering. Its main application is paper mill sludge.

It relies on an **extended network of agents** and sales representatives in Europe, America and Asia.

MARKETED PRODUCTS

Specialized engineering services for construction of new mills and upgrading of existing mills

1

2

BRANDS PORTFOLIO

1

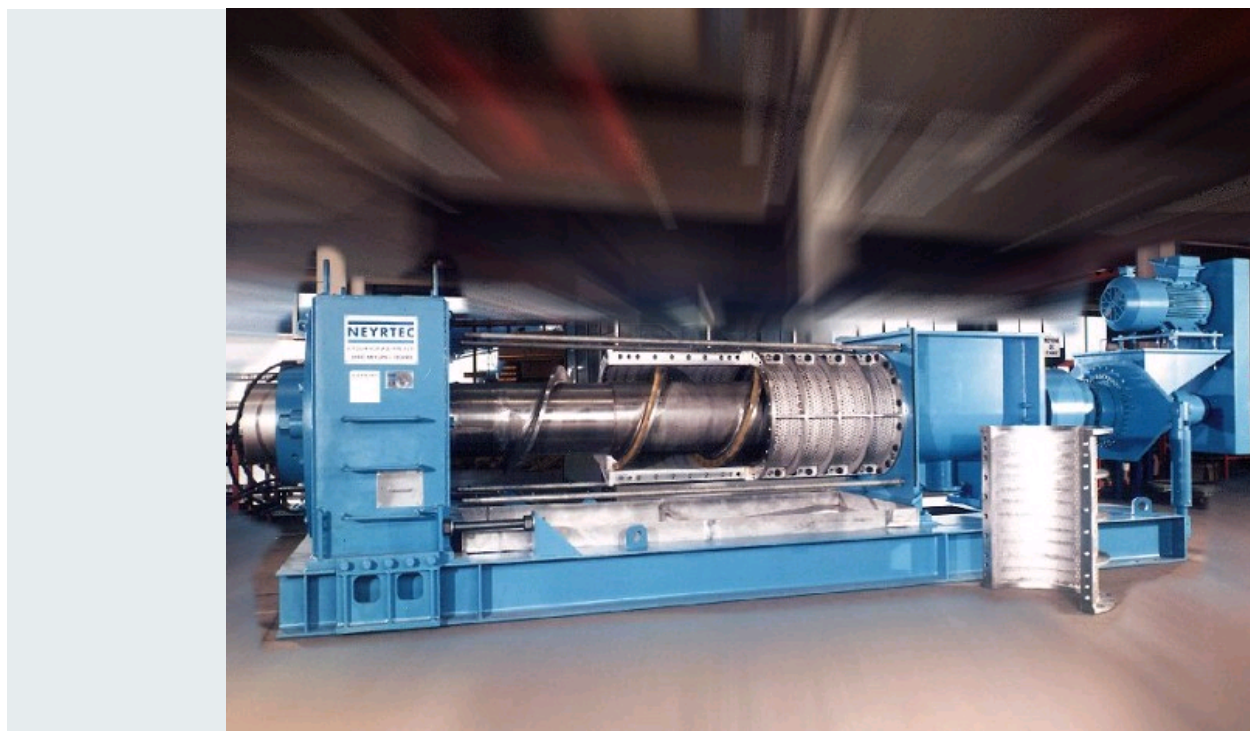
NEYRTEC

2

TASSTER



SYMOP
Membre de la FIM



TASSTER PFB 750



TROMMEL PRETHICKENER RST
2500



TASSTER PFB 750 + TROMMEL RST
2500



TASSTER(R) SCREW PRESS PFB
750 (NEW MODEL)

NEW AND KEY PRODUCTS

The **Neyrtec(R) Tasster(R) screw press** is perfectly suited for dewatering paper industry sludge. It enables a **very high dryness rate** with very **low operating and maintenance costs**. More than 500 machines have been sold worldwide for 30 years.

MAIN CUSTOMERS

INTERNATIONAL PAPER - STORA ENSO - KIMBERLY CLARK - ARJO WIGGINS - METSA TISSUE - SCA - KOTKAMILLS - MUNKSJÖ - CMPC - WEPA - KRUGER - TNPL-EMAMI - GOMA CAMPS....



SYMOP
Membre de la FIM