

## CONTACT INFORMATION

Lionel DANOS  
Project Manager

other manufacturing & business  
plants :

Clextral on the 5 continents  
Contacts on [www.clextral.com](http://www.clextral.com)

## KEY FIGURES

Turnover (2012) : 62.5 M€  
part of the turnover on the export  
(market) (2012) : 81%  
Employees : 248

## CERTIFICATION

ISO 9001 version 2008 - ISO 14001

# CLEXTRAL

## PRESENTATION / KNOW-HOW

CLEXTRAL develops **unique pulping processes** based on **twin-screw extruder** technology, also called "BIVIS" machine.  
CLEXTRAL has sold worldwide in the last 30 years cost effective solutions for producing paper pulp from crop residues & non wood fibers such as cotton, wheat straw, bagasse, hemp, flax...

CLEXTRAL **BIVIS machines** offer optimum pulp quality, lower processing cost, higher process efficiency, less civil engineering costs, reduced manufacturing time, less waste.

This eco-friendly process is especially suitable **for low or medium size capacity plants** producing **high quality pulps** for bank note security paper, writing and printing paper, cigarette and special grades paper, board and molded pulp.

CLEXTRAL is a supplier to the Bank of France, Bank of Russia, Bank of China, Bank of Spain, DELARUE Group, Arjo Wiggins and other security paper producers.

China and Uzbekistan own a production line for writing-printing papers; French, Spanish and Czech paper manufacturers for cigarettes paper; French paper makers for packaging board.

## MARKETED PRODUCTS

Equipment for paper machines	1					
Equipment for stock preparation, paper/board	1					
Board and paper machines and sections of machines	1					
Paper machine parts and elements for paper machines and auxiliary circuits	1					
Maintenance services	1					
Retrofit	1					

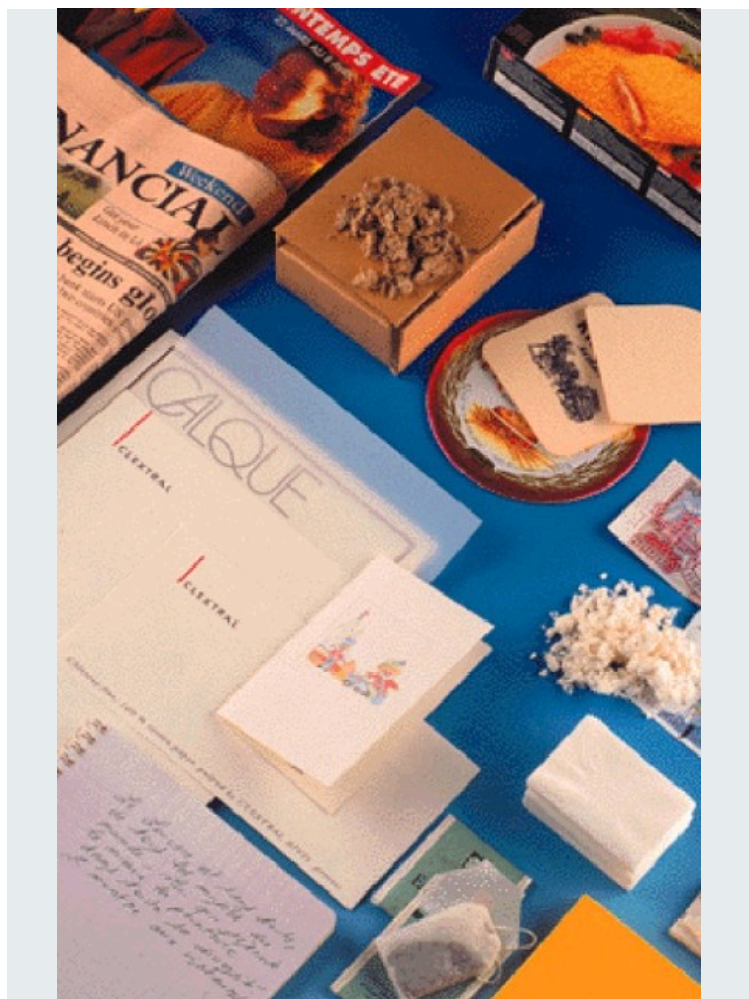
## BRANDS PORTFOLIO

1 CLEXTRAL



# 30 years of experience serving the paper industry

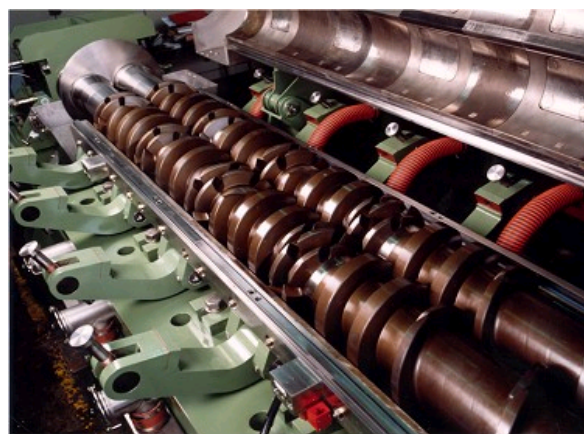
CLEXTRAL



PAPERS PROCESSED BY BIVIS MACHINE



BIVIS MACHINE KRO 200 - EU 240 PAP



BIVIS MACHINE: SCREWS & SHAFTS

## NEW AND KEY PRODUCTS

**BIVIS paper pulp lines offer many advantages compared to conventional processes:**

- The continuous processes using BIVIS machines make the pulp processing time shorter.
- 10 to 15% reduction in energy consumption for wood or annual plants fiber separation
- 10 to 30% decrease of chemicals treatment and pulps bleaching...

The eco-friendly process, which is total chlorine free (TCF), also lowers the quantity of water and effluents (from 30% to 90%), and therefore effluent treatment costs.

A wide range of raw material can be processed into high quality pulp thanks to BIVIS processes for capacities ranging from 50 to 5000 BDkg/h.

## MAIN CUSTOMERS

BANK OF FRANCE - BANK OF RUSSIA - BANK OF CHINA - BANK OF SPAIN - DELARUE - ARJO WIGGINS



SYMOP  
Membre de la FIM