



6, place des Terreaux  
F-69001 LYON  
sales@go2cam.net  
Tel +33 (0)4 72 27 06 64  
Fax +33 (0)4 26 29 99 95

[www.go2cam.net](http://www.go2cam.net)

#### CONTACT INFORMATION

Eric GERVAL  
CEO

#### KEY FIGURES

Turnover (2014) : 1,6 M€  
part of the turnover on the export  
(market) (2014) : 80  
Employees : 16

Equipment categories  
Machine-tool / Software

## GO2CAM INTERNATIONAL

### PRESENTATION / KNOW-HOW

GO2cam International, created in 2009, develops high technical and user-friendly **CADCAM software for mechanical and dental industries**.

The R&D team with its mechanical engineers and their 25 years of experience in CADCAM, strives to offer ever more innovative solutions for workshops.

The increase of numerical processes in workshops and the mutation of the industry area are amongst the main preoccupations of GO2cam International. Besides, in the dental industry, we have been taking into account this evolution lately.

Based on its strong experience, the R&D team shows a unique reactivity to supply companies with **customized CADCAM solutions**. By adjusting our product to the specificities and needs of our clients, we lead them to the optimization of their production.

### MARKETED PRODUCTS

CAM software

1

2

3

### BRANDS PORTFOLIO

1

GO2CAM

2

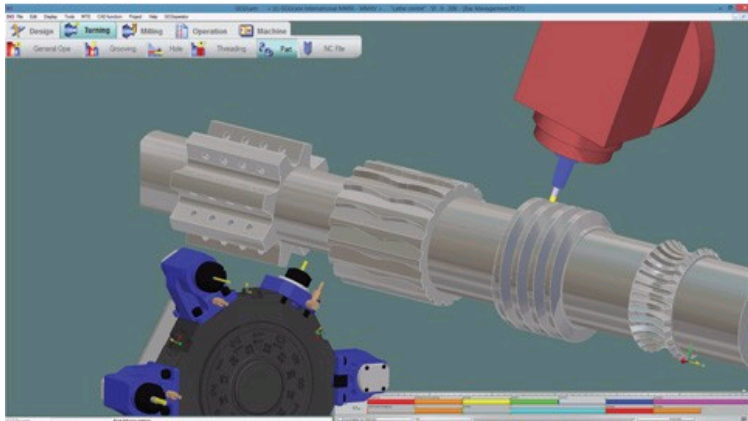
GO2DENTAL

3

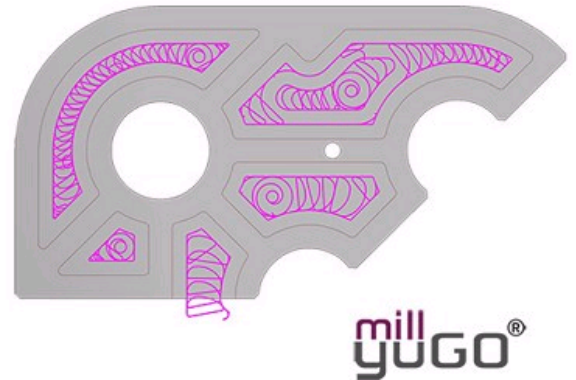
GO2OPERATOR



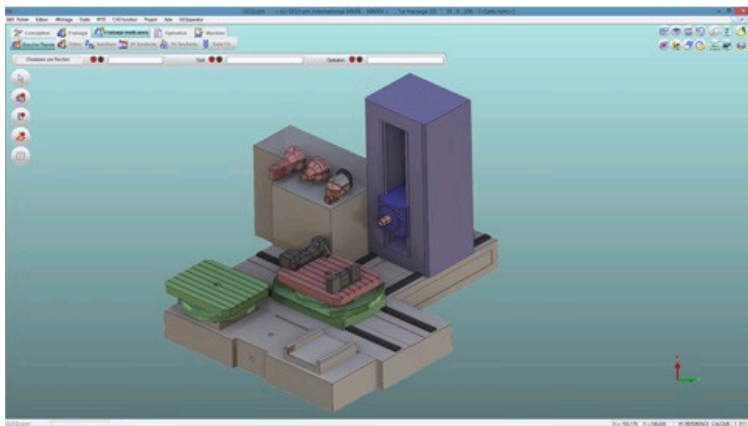
SYMOP  
Membre de la FIM



GO2CAM TURNING

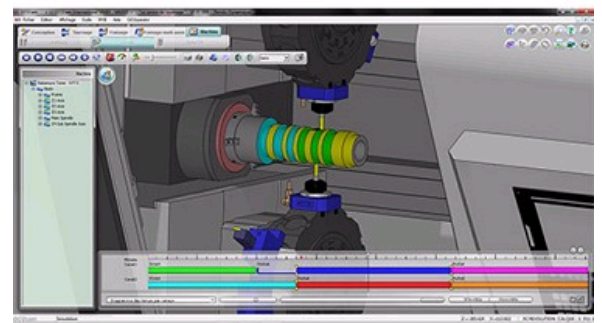


MILLYUGO, THE NEW ADAPTIVE ROUGHING CYCLE



GO2CAM MILLING

MULTI HEADS



MACHINE SIMULATION WITH MTE TO VERIFY TOOLPATHS AND DETECT COLLISIONS

## NEW AND KEY PRODUCTS

GO2cam International presents its new GO2cam v6.03. GO2cam v6.03 includes a new rough cycle adapted to hard material used in aeronautic, called millyuGO. This patented technology is a major step forward in adaptive roughing. It increases the tool life and reduces the machining time. As a result, millyuGO considerably reduces the production costs.

Furthermore, this latest version of GO2cam includes improvements of the MTE (Machine-Tool Environment) which enables a total management of your machine : machine simulation, colinear axes management, synchronisation, multi settings, multi heads...

## MAIN CUSTOMERS

SNECMA - CANON - PANASONIC - BRIETLING - LISI AEROSPACE - LISI AUTOMOTIVE - MITSUBISHI - HILLTOP - SCHAUBLIN - ALSTOM - OPEL - AMARI - EATON - FONDOMETAL - YKK - HONEYWELL - HUTCHINSON - WATERMAN



SYMOP  
Membre de la FIM