

2, boulevard du Fromenteau
72510 MANSIGNE
mcikankowi@aol.com
Tél. +33 (0)2 43 46 15 96
Fax +33 (0)2 43 46 13 84

www.cathild.com

CONTACT INFORMATION

Marc CIKANKOWITZ
General manager

other manufacturing & business
plants :

CATHILD INC
Victoriaville-Québec-Canada

KEY FIGURES

Employees : 35

CATHILD INDUSTRIE

PRESENTATION / KNOW-HOW

CATHILD INDUSTRIE is a french compagny specialized in timber driers manufacturing. Its principal markets are Europe, Russia, America and Africa. Its range of light products are :

- **High capacity low temperature kiln** from 750 to 2 500 m3, dedicated to softwoods drying, with different cuttings and moisture content within short delays with optimal quality. Reduced handling.
- **Double ventilation kiln** VSB from 100 to 500 m3, designed for softwoods with high added value, enabling getting matchless final homogeneity and quality. They can be movable or loaded by bogies on rails.
- **Predriers** from 500 to 1 500 m3, designed for oak and various hardwoods. They enable preserve woods from all defects linked to air drying, whatever the season or the place.
- **Driers and heat treatment NIMP15 furnaces** designed for pallets, cases or packing cutting up.
- **Steamers** operating with direct or indirect steam, designed for wood coloration.
- **Control system** by computer for driers of every brand

MARKETED PRODUCTS

Kiln control equipment	1								
Industrial ovens	1								
Steaming plants	1								
Heat and vent driers	1								
Kiln driers	1								

BRANDS PORTFOLIO

1 CATHILD

Precise, fast and economical drying with advance technology

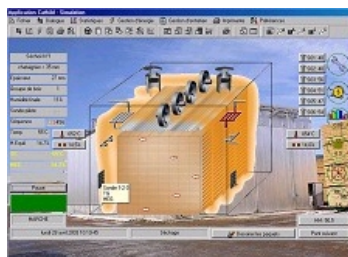
CATHILD INDUSTRIE



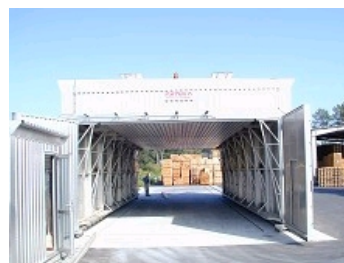
HIGH CAPACITY LOW TEMPERATURE KILN DEDICATED TO SOFTWOODS DRYING, EVERY CUTTINGS UP, EVERY MOISTURE CONTENT WITHIN SHORT DELAYS WITH OPTIMAL QUALITY. REDUCED HANDLING



MGTT KILN SCHEME (MOISTURE GAZ THERMAL TRANSFER)



CONTROL SYSTEM CH12W



MOVING KILN (CATHILD'S PATENT) : REDUCED HANDLING TIME

NEW AND KEY PRODUCTS

High Capacity Low Temperature kiln

These kilns enable dry simultaneously every kind of cutting up whatever initial moisture content they have. Several zones (6 to 16) are driven separately whitout any internal partitioning, allowing total freedom for loading. The central corridor width may be reduced by using lateral forklift. The kilns are equipped with electric double doors at each end. One lift up door for the day + one sectional door ensuring airtightness beside the handling hours.

MAIN CUSTOMERS

KLENK - BAUST - HARLING - PABST - ABIES - VAN ROJE - KOGLER/HASSLACHER -PARISOT - DOMTAR/WEYERHAUSER - DONOHUE - BOIS FRANCS - FORINTEK - LEFEBVRE ET FILS INC - CHERRY FOREST PRODUCTS - FERNALD LUMBER - MEIGNIN MILLS - MONNET SEVE - SIF - OGF - LAPEYRE - DUCERF - GALLIEN - PANAGET - PASQUET - ROZIERE - SRC - SIAT - WEBER - ORTH