



280, rue du 8 mai 1945
F-78368 MONTESSON
info@actemium.com
Tel +33 (0)1 30 86 70 00
Fax +33 (0)1 30 86 72 08

www.actemium.com

CONTACT INFORMATION

Constant BERNARD
Director

other contact :

Juliette DEBROSSE
Communications Manager

KEY FIGURES

Turnover (2014) : 2.1 Billion €
Employees : 20000

Equipment categories
Software / CNC / Assembly

ACTEMIUM

PRESENTATION / KNOW-HOW

ACTEMIUM is the VINCI Energies' brand dedicated to industrial process operating throughout the entire industrial life cycle. ACTEMIUM designs, builds and maintains the customers' production equipment in order to **improve their industrial performance**.

Relying on a profound expertise in process control & automation, electrical & instrumentation, mechanical & piping and process utilities. The ACTEMIUM business units, segmented by industrial process, constitute a unique operational network model, offering both a local and a global approach.

With 300 business units, 20000 employees in 38 countries worldwide and with an annual turnover of over 2.1 Billion Euros, ACTEMIUM positions itself as the market leader in '**Solutions & Services for industry**'.

MARKETED PRODUCTS

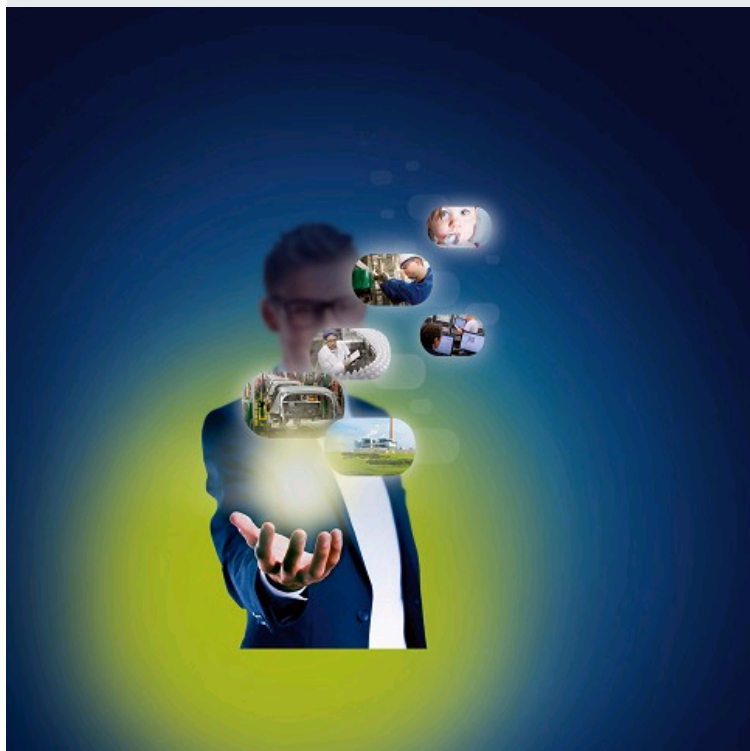
Conveying equipment and systems	1					
Storage and retrieval machines	1					
Components to interlink separate production stages	1					
Other handling, loading and sorting equipment	1					
Storage equipment and systems	1					
Components to interlink separate production stages	1					
Units for assembly systems	1					
Assembly manipulators	1					
Automatic assembly machines	1					
Assembly lines	1					
Assembly robots	1					
Flexible assembling systems	1					
Sheet metal assembly and welding machines	1					
Assembly gripping tools and gripping tool changers	1					
Other assembling machines and equipment	1					

BRANDS PORTFOLIO

1 ACTEMIUM



SYMOP
Membre de la FIM



ACTEMIUM DESIGNS, BUILDS, MAINTAINS ITS CUSTOMERS FACILITIES, WITH THE AIM OF IMPROVING THEIR INDUSTRIAL PERFORMANCE.

NEW AND KEY PRODUCTS

The ACTEMIUM range of services covers the entire industrial life cycle and is based on a profound knowledge of production processes, in all industrial activities. Its expertise are:

- Process control & automation
- Instrumentation
- Mechanical & piping
- Process utilities

MAIN CUSTOMERS

AIRCRAFT: AEROLIA - AIRBUS - DASSAULT - EUROCOPTER - SNECMA - THALES - TURBOMECA - ZODIAC

AUTOMOTIVE: ASTON MARTIN - FAURECIA - FENDT - JAGUAR - JOHN DEERE - LAND ROVER - PSA PEUGEOT CITROEN - RENAULT - TOYOTA - VALEO



SYMOP
Membre de la FIM